

## Contour™ Lock System

AmesburyTruth™ is pleased to present a new line of commercial grade hardware we call Contour™. Our design team has developed a unique hardware system for commercial casement and awning windows. Contour is composed of locks, hinges, and operators designed to compliment one another both aesthetically and functionally. You will notice the smooth design language has a contemporary feel with softened edges that allow the hardware to blend seamlessly into the window.

The Contour™ lock utilizes a longer handle and is cleverly designed to meet ADA requirements. Increased travel allows up to 5 lock points to operate sequentially on Casement sash sizes ranging up to 102" (2,591 mm) tall. The Contour lock products have an integrated gasket to maximize weather resistance around each hardware location. Also available in a single point version for Awning window applications.



**Contour™ Locking**



**Contour™ Tiebar  
Multipoint Locking**



**Contour™  
Single Point**

**We've built a reputation designing hardware.**



**Secure your sash with hardware you trust.**

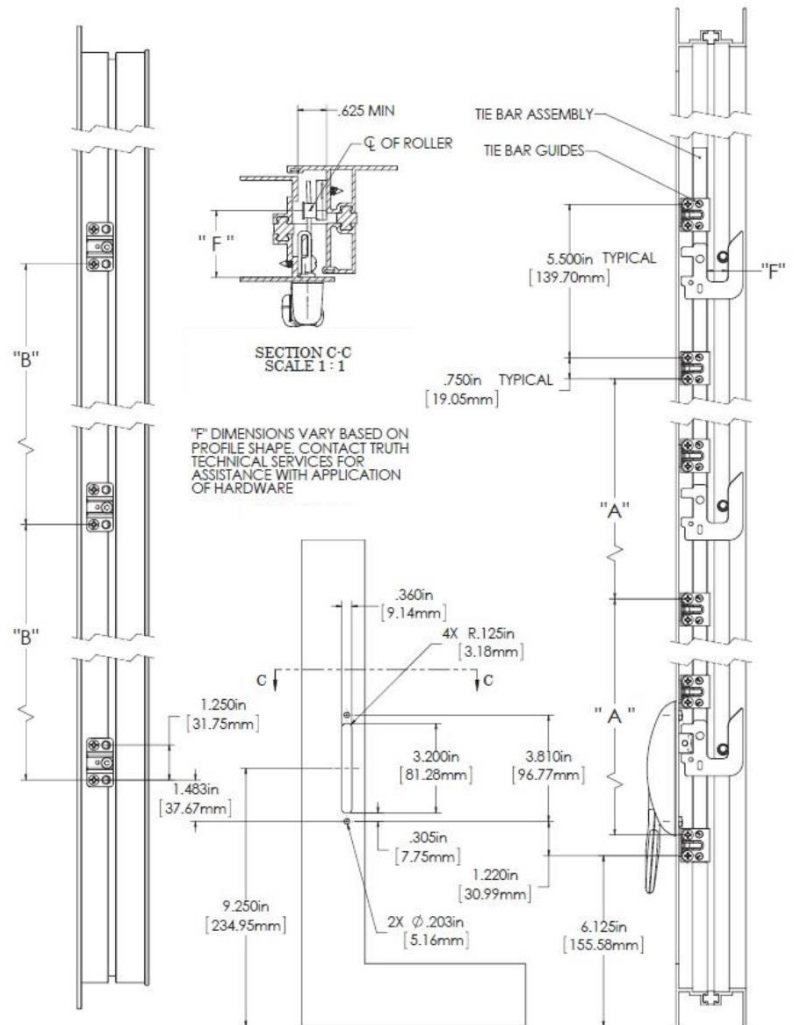
## Contour™ Locking

### Features & Benefits:

- Handle design improves ease of operation and supports ADA force requirements.
- DP 100 Capable on gateway size windows (36" X 72")
- True sequential locking provides effortless weather seal compression.
- Fits a wide range of profile shapes with customizable components.
- Concealed fasteners improve interior aesthetics.
- Non-handed to reduce SKU's
- Integrated gasket enhances weather resistance.
- Pre-located tiebar guides reduce installation time. No jigs or fixtures needed.
- Long lock reach ensures positive lock engagement.
- Adjustable lock points allow for both factory and field fine tuning.

### Technical Specifications

- **Casements:**
  - From 16" to 102" frame heights
  - Up to 5 lock points
  - 350 lbs. per lock point
  - .625" lock reach.
  - Fits .625" profile cavity
  - Powder coated or SST components.
- **Awnings:**
  - Single point locking
  - 450 lbs. per lock Point
  - Multipoint locking also possible.



Contour Lock System Parts	Part #'s
Lock Drive - Multi-Point Lock	24.50.XX.001
Lock Drive - Single Point Lock	24.51.XX.001
Locking Tiebar Assembly	TBD by Profile*
Casement Adjustable Keepers	14481-14488
Awning Keepers (SST)	33702 & 33703

\*"XX" Denotes the finish code

**\*Contact AmesburyTruth Technical Services Dept. for a customized Contour™ lock application today!**